

We take care of it.



40 Years of experience in measure and regulation technology

A. Eberle Africa (Pty) Ltd has been an approved supplier of voltage regulation - REG-D and REG-DA - for more than 25 years. The relays have been supplied directly from Germany to various systems integrators in South Africa.

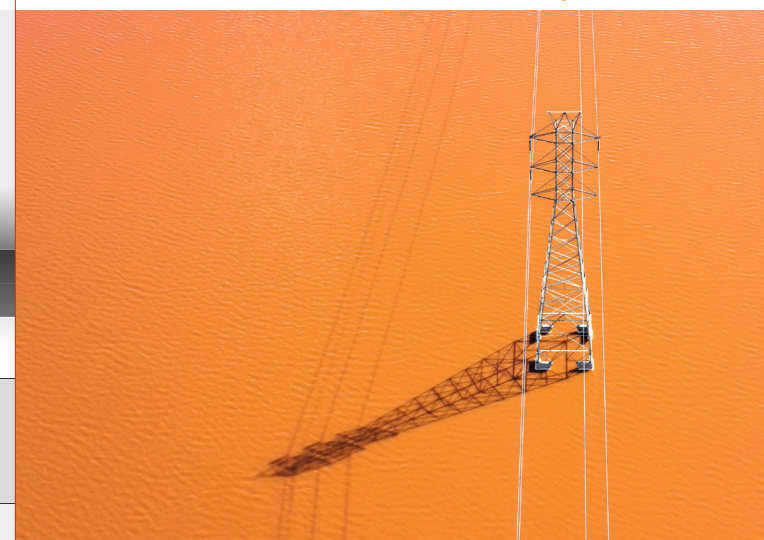
A. Eberle Germany has had a distributor of the main product portfolio in Southern Africa - Magnet Electrical Supplies (Pty) Ltd - to support products not only in sales, but especially in after sales service and in marketing for new business opportunities.

Mr. Till Sybel, CEO of A. Eberle Germany (until end of March 2023), has decided to invest in South Africa and establish, together with Magnet, a new business called A. Eberle Africa (Pty) Ltd. This investment aims to support South Africa and the rest of Africa with the A. Eberle products, to guarantee and continuously improve the security of supply and availability of energy networks.



**A. Eberle Africa (Pty) Ltd**  
 Unit 5, Edstan Business Park,  
 2 lbhubesi Road,  
 Riverhorse Valley,  
 Durban, South Africa  
 +49 172 54 96 122  
 tills@a-eberle.co.za  
 www.a-eberle.co.za

We take care of it.



|                            | Voltage Regulation   |  | Breakdown Voltage Online with TrafoSticks  |   | Low Voltage Regulation   |   | Short-Circuit and Earth Fault Indicators   |  |
|----------------------------|--|--|--|---|--|---|--|--|
|                            | REG-D  | REG-DA   | TrafoStick TS4x  | TrafoStick TS5x   | LVRSys Outdoor   | LVRSys Indoor   | EOR-IDS  | EOR-3DS  |
| <b>Design</b>              | Various Designs<br>19" plug-in module, surface-mounted and panel-mounted housing   | Metal Housing<br>for wall mounting housing, Panel mounting housing and din-rail mounting | Metal Housing<br>Housing: EN-AW-6063<br>Measuring zone: EN-AW-7075   | Metal Housing<br>Housing: EN-AW-6063<br>Measuring zone: Brass / Gunmetal  | Various<br>depending on requirements                                       |   | Various Designs<br>Panel mounting housing, or alternatively mountable on DIN rail mounting | Various Designs<br>Panel mounting housing, or alternatively mountable on DIN rail mounting   |
| <b>Function 1</b>          | Regulation and control of transformers with on-load tap-changers   |  | Condition-based Power Transformer - and OLTC-monitoring  |   | High resistance<br>to over voltages, direct and indirect lightning strikes | Voltage stabilization<br>for longer lasting & more efficient machines | Earth-Fault and Short-Circuit Indicator<br>(directed/undirected)                           | Earth-Fault and Short-Circuit Indicator<br>for intelligent sub-stations  |
| <b>Function 2</b>          | Limit value monitoring, parallel operation with ParaGramer, current influence, detection of creeping network failures                  |  | ONLINE-measurement of Breakdown Voltage (BDV)!<br>TrafoSticks are unique!                                      |   | Overload capable like NH fuse  |   | Fault Recorder and Logbook<br>for precise error analysis                                   |  |
| <b>Function 3</b>          | Applications:<br>Voltage Regulation, three winding transformer, transformer banks, phase shifting transformers, variable shunt reactor |  | TrafoStick TS4x:<br>Measurement value and accuracy   | BDV @20°C (Breakdown voltage [kV]): 1-5 %<br>BDV TM (Breakdown voltage [kV]): 1-5 %<br>Wc (Water content [ppm]): 2.0 %<br>Temp (Temperature [°C]): 0.1 %<br>RS (Relative saturation [%]): 1-5 % | No grid interference<br>causes no flicker or harmonics                     | Robust<br>Tolerates harmonics and flicker                             | Incl. Rogowski Coil Sensors<br>and low power Sensors                                       | Compatible<br>to many low power sensors  |
| <b>Function 4</b>          | Voltage control system<br>can be created by adding further options or devices  | Configurable hardware<br>with various options  | TrafoStick TS5x:<br>Additional measurement of two gases<br>Hydrogen (H <sub>2</sub> ) and Carbon Monoxide (CO) |   | Highly efficient > 99,5 %  |   | -  | Additional intelligent functions<br>through free programmability   |
| <b>Function 5</b>          | Expandable<br>by customer specific programming   |  | Available accessories:<br>e.g. DN50 - PN 10/16 flange or DN80 - PN 10/16 flange or other on request            |   | Easy installation<br>as a cable distribution cabinet                       | Intuitive operating concept<br>Simplest parameterization via display  | Long-life Capacitor<br>for >4h operation   | 2x Ethernet<br>100 mm mounting depth   |
| <b>Function 6</b>          | SCADA Protocols:<br>IEC 61850 inkl. GOOSE and Sampled Values, IEC 60870-5-101/103/104, Modbus, DNP 3.0, Spabus, Profibus-DP            |  | Customer feedback:<br>„Change in paradigm!“<br>- from temporarily and manually to ONLINE and professional.     |   | Adjustable response time of the controller<br>< 30 ms to 100 s             | Immediate regulation<br>< 30 ms response time                         | Modbus RTU   | SCADA Protocols:<br>IEC 61850 GOOSE, IEC 60870-5-101/103/104, Modbus, Modbus-Master, DNP 3.0, MQTT IoT, MQTT Management & Operations |
| <b>Software/Function 7</b> | AEToolbox  |  | TRAFogaUGE<br>visualization and monitoring software  |   | Operating Temperature<br>-40°C up to +50°C<br>ambient temperature          |   | No Software<br>save & load parameters via SD-Card  | AEToolbox<br>(encrypted TCP/IP communication)  |

# Measure. Regulate. Across all grids.

Shaping the grid infrastructure of tomorrow – this is our goal.  
 With our future-oriented solutions, we help our customers to face future challenges.

## Product overview

We take care of it.



## Comparison Power Quality Tools

Simply ingenious,  
ingeniously simple.



Power Quality Mobile

| Option  | PQ-Box 50     |       |        | PQ-Box 150    |        |       |        | PQ-Box 200        |    | PQ-Box 300              |  |
|---|---------------|-------|--------|---------------|--------|-------|--------|-------------------|----|-------------------------|--|
|   | Basic         | Light | Expert | Basic         | Basic+ | Light | Expert | T0                | T1 |                         |  |
| Data memory (memory optional)   | 1 GB          |       |        | 4 (32) GB     |        |       |        | 4 (32) GB         |    | 8 (32) GB               |  |
| Sampling frequency voltage / transient measurement                        | 20,48 kHz / – |       |        | 20,48 kHz / – |        |       |        | 40,96 kHz / 4 MHz |    | 409,60 kHz / 409,60 kHz |  |
| Sampling frequency current  | 20,48 kHz     |       |        | 20,48 kHz     |        |       |        | 40,96 kHz         |    | 40,96 kHz               |  |
| Input voltage (resolution)  | 4 (16-bit)    |       |        | 4 (24-bit)    |        |       |        | 4 (24-bit)        |    | 4 (24-bit)              |  |
| Input current (resolution)  | 4 (16-bit)    |       |        | 4 (24-bit)    |        |       |        | 5 (24-bit)        |    | 5 (24-bit)              |  |
| Bridging energy failure   | 1,5 h         |       |        | 4,0 h         |        |       |        | 4,0 h   3,5 h     |    | 3,5 h                   |  |
| IP protection   | IP65          |       |        | IP65          |        |       |        | IP65              |    | IP65                    |  |
| Voltage harmonics according to IEC 61000-4-30 Ed. 3 Kl.A                  | –             | •     | •      | –             | •      | •     | •      | •                 | •  | •                       |  |
| Voltage harmonics 200 Hz frequency bands - 2 kHz to 9 kHz (IEC 61000-4-7) | –             | –     | –      | –             | –      | –     | •      | •                 | •  | •                       |  |
| Display (Inch)  | –             |       |        | • (4,5)       |        |       |        | • (4,5)           |    | • (4,5)                 |  |
| Digital In- and Outputs (Trigger)   | –             |       |        | –             |        |       |        | 1/0               |    | 1/0                     |  |
| Residual Current Monitoring RCM & FCM                                     | –             |       |        | –             |        |       |        | • (accessories)   |    | • (accessories)         |  |
| Temperature input for PT100 / PT1000 / KTY                                | –             |       |        | –             |        |       |        | • (accessories)   |    | • (accessories)         |  |
| Automatic evaluation according to norms                                   | –             | •     | •      | –             | •      | •     | •      | •                 | •  | •                       |  |
| Magnitude V,A   | < 0,1 %       |       |        | < 0,05 %      |        |       |        | < 0,05 %          |    | < 0,05 %                |  |
| Voltage and current harmonics up to                                       | H50           |       |        | 9 kHz         |        |       |        | 9 kHz             |    | 170 kHz                 |  |
| Wifi  | •             |       |        | SI            |        |       |        | SI                |    | SI                      |  |

Power Quality System



| PQI-DA smart       | PQI-DE             |
|--------------------|--------------------|
| 1 (32) GB          | 1 (32) GB          |
| 40,96 kHz / 40 kHz | 40,96 kHz / 40 kHz |
| 40,96 kHz optional | up to 40,96 kHz    |
| 4 (16-bit)         | 4 (16-bit)         |
| 4 (16-bit)         | 5 (16-bit)         |
| Supercap           | Supercap           |
| IP20               | IP54               |
| •                  | •                  |
| •                  | •                  |
| • (1,7)            | • (5,0)            |
| 2/2                | 8/4                |
| –                  | •                  |
| –                  | •                  |
| •                  | •                  |
| < 0,05 %           | < 0,05 %           |
| 9 kHz              | 9 kHz              |
| –                  | –                  |

## WinPQ Software

High-quality analysis software for your Power Quality data

- Plug&Play installation thanks to guided wizard
- Security by Design according to BDEW Whitepaper
- Separate flow chart for each measuring point
- TOP / DOWN analysis
- Autoreporting per measuring point



WinPQ system solution for all fix-installed and mobile power quality analyzers from A. Eberle. Monitor power quality permanently - from high to low voltage in one system. Intuitive operation despite large data volumes.

## WinPQ mobil & PQ-Box App

Features of the WinPQ mobil

- Extensive evaluation functions such as load analysis or the ability to determine the cause of network faults
- Automatic report creation to preset or freely adjustable standard settings
- Free software and free updates of the evaluation software and device firmware

PQ-Box App for Android and iOS

A free app for Android and iOS operating systems allows all PQ Boxes with integrated WLAN/Wi-Fi interfaces to be operated wirelessly. A wide range of online screens is available. It is also very easy to set device parameters for all measuring devices using a smartphone.



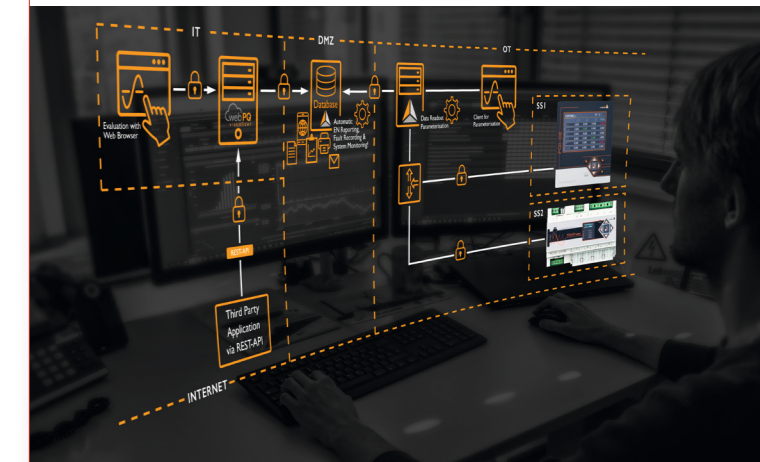
We take care of it.



## WebPQ™ Visualizer

The intelligent add-on to WinPQ

The fully responsive & web-based user interface as an installable app for the evaluation of your Power Quality data in your local IT environment!



State-of-the-art web technology with:

- Grid Overview Dashboard – Detect grid faults at a glance!
- Analysis section – Get to the bottom of causes of grid disturbances individually
- Configurable REST-API – Open for data exchange in your company
- 100 % Secure! – IT-Security via full User Rights Management System!

